

SHIPLAKE COURT

HENLEY-ON-THAMES

SHIPLAKE COURT

HENLEY-ON-THAMES

Governors:

P. F. CARTER-RUCK (Chairman)
CECIL F. BAKER
F. S. BIRD
A. DE MORLEY EVERETT
MRS. A. DE MORLEY EVERETT
A. P. GOODWIN
D. J. SKIPWITH

Headmaster:

D. J. SKIPWITH, M.A. (Oxon.)

Assistant Masters:

E. W. ENTWISTLE, B.A. (Oxon.)
J. F. FOSTER, B.A. (Oxon.)
BRIGADIER G. N. GASKELL, M.C., Slade School of Art
C. R. E. GILLET, B.A. (Oxon.)
W. R. HARTLEY, M.A. (Cantab.)
D. E. HEALEY, F.R.C.O., A.R.C.M.
COLONEL THOMAS KIRKWOOD, M.A. (Cantab.)
P. T. ROBINSON, M.A. (Cantab.)
LT.-COLONEL W. H. C. TRAVERS, B.A. (Cantab.), A.I.Mech.E.
H. E. WELLS-FURBY, M.A. (Oxon.)
D. F. K. WELSH, B.A. (Cantab.)
R. S. C. WOOD, B.A. (Oxon.)

Chaplain:

THE REV. J. E. OVERTON, M.A. (Oxon.)

Bursar:

LT.-COLONEL H. W. NEWELL

School Medical Officer:

DR. A. J. SALMON, M.B., B.S., D.Ch., D.O.Bst., R.C.O.G.

Sister:

MISS A. BLACK, S.R.N.

Matron:

MISS M. E. REED, S.R.N.

Telephone: Wargrave 516

SHIPLAKE COURT is an independent school for boys aged 12 to 18. It is modelled on Public School lines and each boy has, as well as the masters who teach him in the classroom, or on the playing field or river, his own Tutor, who is personally responsible for supervising his academic progress and helping him to develop his character along the right lines. Each Tutor is in charge of a House, and the Houses are smaller than in most Public Schools to ensure individual attention.

HOUSE AND GROUNDS

Shiplake Court stands in its own magnificent grounds on a hill facing South, commanding a view of one of the most beautiful upper reaches of the River Thames. The grounds stretch down to the river bank, 70 yards away and 100 feet below, and they include the large wooded Lynch Island.

Although the site and name of Shiplake Court have been known for many centuries, the present house is comparatively new. It was built to the design of the late Sir Ernest George of red brick with stone mullioned windows and a Cotswold stone roof. The principal buildings include the Great Hall with a magnificent open timber roof and minstrels' gallery, the library, dayrooms, dormitories and recreation rooms. The school changing-rooms, which are completely modern, and music and carpentry sections are also in the main block.

The adjoining block houses the main class-rooms, science laboratories and art school.

The grounds provide for all the outdoor needs of a first-class school, including a boat house on the river and playing fields on gravel sub-soil which can be used even after the wettest spell.

The Church, where the boys attend Sunday and other services, adjoins the School.

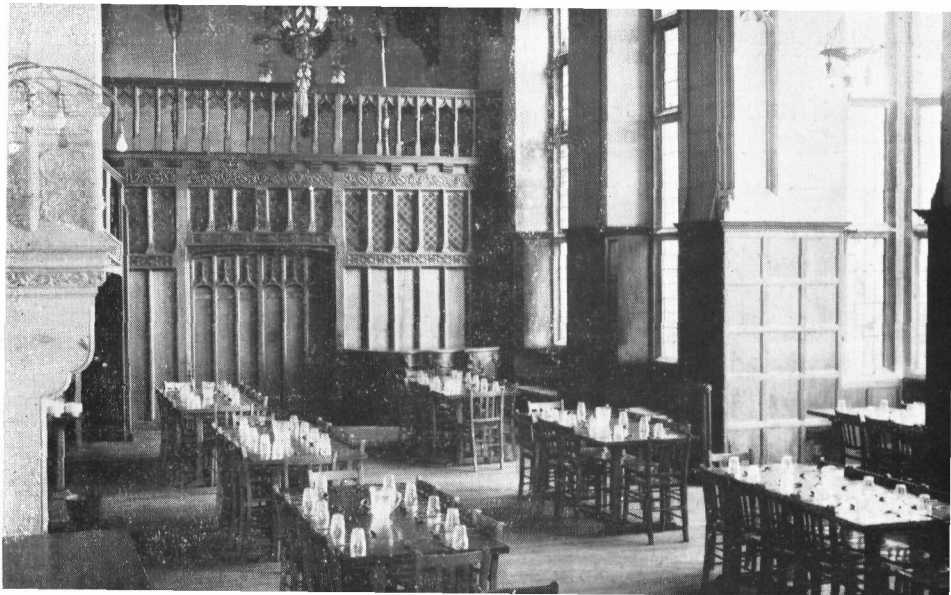
AIMS

Our aim is to provide a full and balanced education over the transition period from boyhood to young manhood and to encourage, by example as well as by precept, the qualities of clear vision, independent judgment, good manners and integrity.

We aim to develop a boy's mind by encouraging his natural interest and curiosity in the classroom; to develop his body through the pleasure of practising a game or sport in the field; and to develop his social poise, confidence and independence by letting him take part in a society or hobby of his own choice.



THE COURT



PART OF THE GREAT HALL WITH THE MINSTRELS' GALLERY



PART OF THE PLAYING FIELDS



ROWING AND SAILING ON THE THAMES. LYNCH ISLAND ON THE RIGHT

ACADEMIC

Classes are limited to not more than 16 boys, so that the master in charge can give a considerable time to the special problems of each boy. The subjects taught are Divinity, English, Latin, Greek, French, German, Mathematics, Physics, Chemistry, Biology, History, Geography, Art and Music.

The syllabus is designed for boys to sit for the General Certificate of Education at the O Level, when they have reached the necessary standard. They may then go on to A Level and University Entrance.

CAREERS

Every assistance is given to boys and their parents in the selection of suitable careers and in advising them on the qualifications necessary for achieving their ambitions in their future lives.

CADET FORCE

Every boy is expected to join the Cadet Force and it is hoped that senior boys will go to camp in the summer holidays. All Cadets will be able to shoot on the school miniature range.

GAMES AND SPORT

All boys take part in one main team sport at least three days a week. These sports are Rugby Football, Rowing and Cricket. There is a charge of 3 guineas per term for membership of the Rowing Club in those terms when there is Rowing. On the other weekdays, they may choose, depending on the season, between Lawn Tennis, Athletics, Swimming, Cross-country Running, Boxing, Association Football, Sailing and also, as extras, Riding, Golf and Squash Rackets. All boys do Physical Training.

RECREATION

It is recognized that not all boys are musically or artistically inclined, but the many activities of Shiplake Court make it possible for every boy to find at least one interest outside the classroom which will give him the pleasure of a hobby of his own and the stimulus of helping in the organization of a society whose common interest he shares.

Apart from singing in the choir, playing a musical instrument or acting in the school play, a boy has the chance to work in the art studio or carpenter's shop, or to take up such interests as photography, ornithology, debating or chess. Boys may also join the local fishing club and take part in its competitions.

RELIGION

The school is Church of England, and uses the Prayer Book. Each morning opens with short prayers or a school service in the Parish Church. On Sunday all boys go to the Parish Church of Shiplake, but they are given considerable freedom in the choice of which services they attend.

Confirmation classes are held by the Chaplain and it is hoped that all boys not confirmed before arrival will be confirmed from the School.

FEES

The School Fees are 130 guineas a term. School outfit, travelling and other standard school extras are charged separately. No fee is added for medical attention except for the services of a specialist or nurse. Optional extras: Instrumental Music, Elocution, Riding, Squash Rackets and Golf, are charged by arrangement.

Each boy buys his own text-books, which are charged to his parents. The books, provided they are in good condition, may be sold back to the school when he has finished with them.

Facilities are available for the payment of fees by a lump sum.

An Entrance Fee of five guineas is charged on completion of the Admission Form. This is returnable if the boy can only be entered on the Waiting List and no vacancy for him arises. Two terms before the date of entry, a further Registration Fee of 20 guineas is charged. This is returnable if the boy fails the Common Entrance Examination or interview. An arrangement may also be made whereby the Registration Fee is returnable in the event of a boy being entered for more than one school and the parents giving notice immediately after the Common Entrance results are announced that his vacancy will not be required.

ADMISSION

Boys are admitted after the Common Entrance Examination and a satisfactory interview with the Headmaster. In the Common Entrance Examination, allowance is made for interrupted education as a result of travel or illness and consideration is also given to indication of talent in any particular subject.

The earliest age for admission is at present 12, but the usual age of entry to Shiplake Court from a preparatory school is 13. In view of the long waiting list for Shiplake Court, parents are advised to apply for registration of a vacancy well in advance of their son's anticipated date of entry to the School.

