

Inclusive • Individual • Inspirational

Shiplake 7s

Sunday 3rd February 2013



The Cracknell Cup

Shiplake College
www.shiplakesports.org.uk

GROUPS AND DRAW

Group A		Group B	
1	Abingdon	6	Bromsgrove
2	Shiplake	7	Hurst
3	Oratory	8	Radley
4	Haileybury	9	QES Barnet
5	Latymer Upper	10	Stephenson Studio

1st and 2nd place in each group through to the cup.
3rd and 4th place through to the plate.

Stage	Time	Pitch 1	Pitch 2
Group A	11:00	1 v 2	3 v 4
Group B	11:20	6 v 7	8 v 9
Group A	11:40	2 v 5	1 v 3
Group B	12:00	6 v 8	7 v 10
Group A	12:20	2 v 4	1 v 5
Group B	12:40	6 v 10	7 v 9
Break			
Group A	13:30	1 v 4	3 v 5
Group B	13:50	6 v 9	8 v 10
Group A	14:10	2 v 3	4 v 5
Group B	14:30	7 v 8	9 v 10
Plate Semi	15:00	A3 v B4	A4 v B3
Cup Semi	15:20	A1 v B2	A2 v B1
Finals	15:40	Cup	Plate
16:00		Presentations	

CHRIS CRACKNELL – ENGLAND 7s



Chris Cracknell left Shiplake in 2002 and went on to experience club rugby at Harlequins, Cornish Pirates (EDF Trophy Winner), Newbury, Bath (Heineken Cup) and Worcester. Chris has previously represented England U19 and U21, having captained the South West U18 side in 2002-03.

Starting all except two of England's 45 matches in 2010-11 HSBC World Series proved the 7s pedigree of Chris Cracknell, who played in his 31st tournament at the Gold Coast 7s in Australia last October and has also feature in a one 7s World Cup and a Commonwealth Games over

the years. Chris recently underwent surgery on a torn ACL he sustained in that very tournament. However, he is looking to get back on the field by March 2013. Chris lives in London and is a keen supporter of the 7s programme at Shiplake.

The cup today is named in honour of Chris and his achievements on the field since leaving Shiplake.

“To all players and supporters: A very warm welcome to the inaugural Shiplake 7s! I hope you are all ready for a fantastic day of school boy 7s and some great expansive rugby! Good luck to everyone involved - I hope you have a very enjoyable day.”

WELCOME

It is a great honour to welcome you all to Shiplake College's first ever 7s tournament. I hope you enjoy the day and the quality of rugby that's on offer from all pupils. Can I also take this opportunity to offer a warm welcome to all the visiting teams, supporters and parents from all schools in attendance.

Shiplake College offers fantastic opportunities for sport, all set in a beautiful 45-acre site located on the banks of the River Thames. We have rugby players training on our award-winning front fields throughout the season, with cricketers and tennis players enjoying its use in the summer. Rowers have the use of our idyllic stretch of river and our range of facilities and allow pupils to experience and excel in whatever sport they wish.



The philosophy of sport at Shiplake College is not only the pursuit of excellence and professionalism for the elite, through quality teaching and coaching, but to also raise achievement across the entire ability range within a supportive environment which helps all students realise and maximise their physical gifts. Here at Shiplake we offer a range of activities that allow pupils the 'Right to Play'.

Our students' achievements both in terms of teams and individuals have grown and some highlighted achievements from the past are Will Satch, winning Olympic Bronze, Ollie Morgan competed for Wales, Tom Howe, currently in the Wasps Academy and England U18's, George Davis in the Wasps Academy, Fili Savou, Saracens Academy, Max Chandler and Rob

Waldron both in the Wasps Academy U16's, Jo Unsworth, Junior World Championships rowing, five GB rowing trialists, Mathew Dalrymple Berkshire U13's cricket, Sam Cooke, Bucks County Hockey, just to name a few future stars.



At Shiplake College we aim to provide opportunities to all our pupils, no matter what their sporting ability. We offer sporting tours all around the world, having the opportunity to embark on a tour is something pupils will cherish for a lifetime. Previous tours have included Dubai for cricket, Holland for hockey and most recently North America for rowing. Future tours for the college are cricket and tennis to Barbados, hockey to Spain, junior rugby to France and senior rugby to South Africa (2013).

I would like to thank Steve Beaumont of Thomas Franks, our caterers, DE photography (www.dephoto.biz) and Tom Allen of Flying Bean Café.

I hope you enjoy the tournament and that all teams compete to a high standard. If you would like further information, a visit to the college, or even think you could help develop sport further at Shiplake College, then please don't hesitate to get in contact.

Mr S A Beckett
sbeckett@shiplake.org.uk

RULES & MEDICAL

1. Laws of the game apply for Sevens, U19 variations.
2. All players must be U18 on 1st September 2012.
3. The size of the squad should be a maximum of 12 players.
4. Rolling substitutions are allowed for any reason. Please ensure this does not interfere with or slow down play.
5. All games will be 7 minutes each way.
6. Group placing will be determined by: wins, tries scored, points differential, conversions scored, then a toss of a coin.
7. All decisions by the Tournament Director (Mr Austin Kersey) are final.

Medical cover is provided by Shiplake College – all injuries must be reported to the medical tent to be assessed.



TOM HOWE – ENGLAND U18



Tom Howe, who is studying for three A-Levels in Shiplake College's Upper Sixth, has been selected for England's U18 Rugby Squad. His selection comes after a successful August camp where Tom finished first amongst the aspiring young players over both the 10 metre (1.61 seconds) and 40 metres (4.83) trials. Hopefully he can put himself in the frame for selection for European U18 internationals in the Spring of 2013 followed by the possibility of playing further internationals in the Southern Hemisphere.

Tom began playing when he was just four years old but by the age of 10 he had realised that Rugby Union was the one passion which he wanted to pursue and excel in. Tom had his first taste of professional Rugby Union recently when Wasps selected him on the wing for their LV= Cup match v Leicester Tigers. The hours of training and conditioning that Tom undertakes in his home gym are reaping benefits. Tom has recently been offered a Wasps 1st XV contract for the 2013-2014 season.

Sam Beckett, 1st XV coach and Head of Rugby at the College, says:

'Tom has blistering pace, an ability to break-through tackles and the willingness to seek out work, whether it is running support lines or tracking back to make vital tackles. Yet those attributes alone are not enough to bring international selection. Tom is a team player, he plays for his team mates and they play for him. His passion to develop and improve is what has impressed the England U18 selectors.'

1ST XV CAPTAINS

1960	P H Morkel	1987	J Buck
1961	D C Gutteridge	1988	L McCall
1962	A H Slatter	1989	D Richards
1963	N C Fawkes	1990	A Hall
1964	G C Coulton	1991	J Ostroumov
1965	A L Barbour	1992	J E Polanski
1966	A L Barbour	1993	R Oliver
1967	J C McKenzie	1994	K Sanusi
1968	N J C Godwin	1995	E King
1969	R Newton	1996	No Record
1970	J N Falk	1997	J O’Gorman
1971	I Baldry	1998	M Alfred
1972	M V Patterson	1999	H Brown
1973	J M P Clayton	2000	W Paddison
1974	H Alireza	2001	M R Gurney
1975	H Alireza	2002	C T Mills
1976	A N W Newman	2003	B Holiosmenos
1977	M Broad	2004	J Orpwood
1978	J Hearnden	2005	R Sparkes
1979	J StG Tolputt	2006	W Ewart
1980	R Pimm	2007	T Morgan -Harris
1981	S Checketts	2008	A Middleton
1982	P Sansom	2009	R Wright
1983	A J Woof	2010	E Quelch
1984	M Emmanuel	2011	M Thomas & Ian Brown
1985	C Howie	2012	Tom Howe & Nick Arbuckle
1986	A R Salleh		

SPORTS SCHOLARSHIPS

Shiplake offers sports scholarships to outstanding candidates who are not only be talented and skilful players, but display qualities of leadership and a depth of understanding in their chosen sport. In addition, they must be of at least County standard and will demonstrate the necessary high level of fitness relevant to their chosen sport. It would be unusual for these sports not to be major games at Shiplake. Scholarship applicants should send in a written record of all their achievements during the past two years, endorsed by their PE teacher, together with references from coaches or trainers. A character reference from their current school is also a prerequisite for entry into the scholarship group.

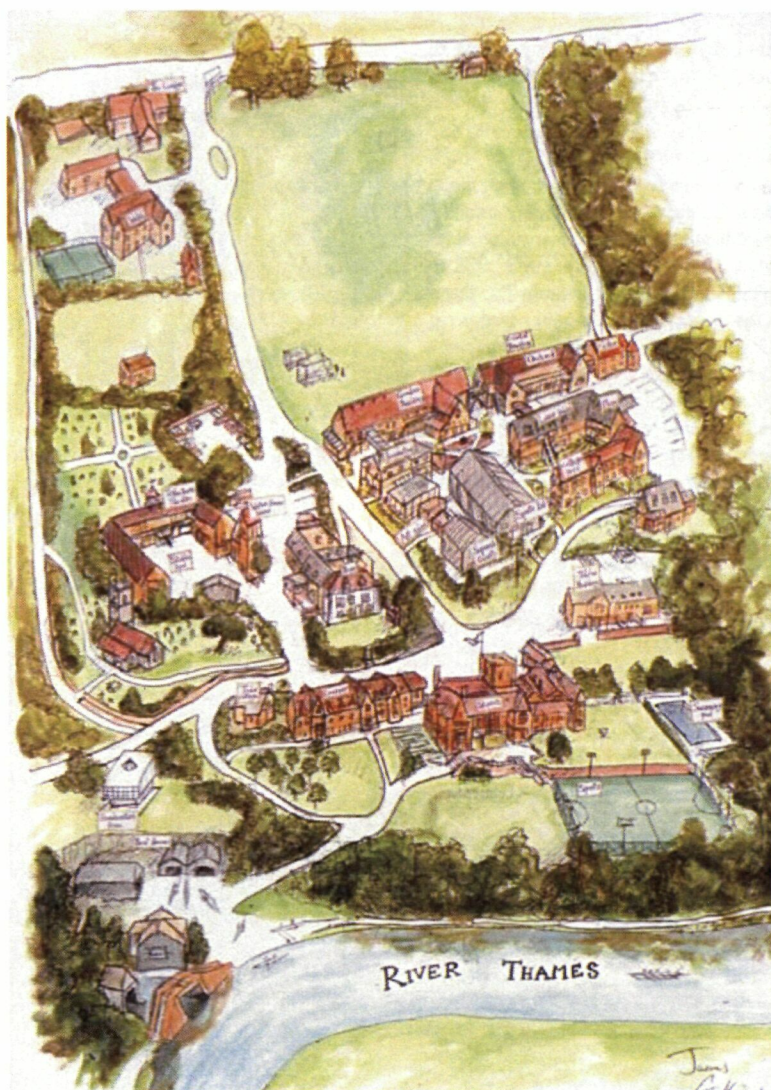


To discuss applying for a scholarship, please contact the Registrar, Ms Rebecca Tocknell, on 0118 940 2455.



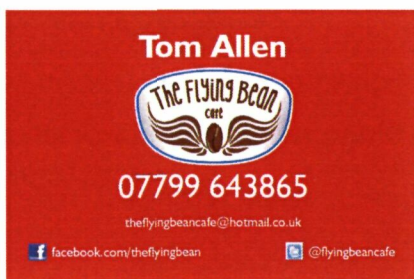
Shiplake College

—  Henley-on-Thames — 

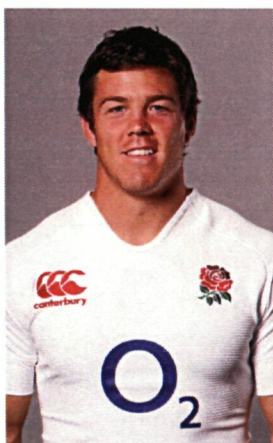


THE FLYING BEAN CAFÉ

Thomas Franks, our caterer at Shiplake will be providing a selection of hot food at a variety of prices. Please head over to the entrance of New Field if you feel hungry! Flying Bean Café price list can be found below.



	<u>REGULAR</u>	<u>LARGE</u>
Cappuccino	£2.20	£2.60
Caffé Americano	£2.00	£2.40
Caffé Latte	£2.20	£2.60
Café Mocha	£2.30	£2.70
Flat White	£2.20	£2.60
Double Espresso	£1.70	
Macchiato	£1.90	
Hot Chocolate	£2.20	£2.60
English Breakfast Tea, Earl Grey	£1.50	
A Selection of Fruit Teas	£1.50	



ANTHONY ALLEN

LEICESTER TIGERS & ENGLAND

"Good luck to the Shiplake 7's squad. Enjoy having the tournament at home. Go out and excel yourselves! In 7's you should let the ball do the work, easier said than done!!"

ELMER COTTON OXFORD

A CENTURY OF SPORT

Supplying **Shiplake College Rugby** with a huge range of top quality printed/embroidered Sports Clothing.



Contact: Dale Harris (Teamwear Rep)

Email: info@elmercottonoxford.co.uk

Tel: 07788 134979

Shiplake College
— Henley-on-Thames —