

To July '68

SHIPLAKE COLLEGE

HENLEY-ON-THAMES



SHIPLAKE COLLEGE was founded in 1959 by Alexander de Morley Everett and Mrs. Eunice Everett. The College is a Charitable Trust with a Board of Governors. It has been recognised as efficient by the Department of Education and Science. There are 194 boys, of whom 8 to 10 are Day Boys.



1. Shiplake Court
2. Everett House
3. The Village Church
4. Classrooms
5. Welsh House

6. The Main Ground
7. Science Buildings
8. Art & Music Rooms,
Day Rooms & the School Shop
9. Tennis Court

HOUSE AND GROUNDS

Shiplake College stands in its own magnificent grounds on a hill facing South, commanding a view of one of the most beautiful upper reaches of the River Thames. The grounds stretch down to the river bank, 70 yards away and 100 feet below, and they include the large, wooded, Lynch Island.

Although the site and name of Shiplake Court have been known for many centuries, the present house is comparatively new. It was built, to the design of the late Sir Ernest George, of red brick with stone mullioned windows and a Cotswold stone roof. The main building includes the Great Hall, with an open timber roof and minstrels' gallery, the library, dayrooms, dormitories, carpentry shop and modelling room.

There are four Houses, two (Skipwith and Burr) in the Court itself and two (Everett and Welsh) in separate buildings which are self contained except that the whole School has its meals in the Great Hall.

The main classrooms and laboratories are in separate blocks and another group of buildings contains the School Shop, Music Rooms and Art School.

The grounds provide for all the outdoor needs expected of a first-class school, including two boat houses on the river, and well-drained playing fields.

EDUCATION

The syllabus is designed to give a good all-round education for boys of varying standards. All boys sit for the General Certificate of Education at Ordinary Level in those subjects which are within their capacity. Suitable candidates go on to Advanced Level and University Entrance.

Classes are usually limited to not more than 16 boys, so that the Master in charge can give a considerable time to the special problems of each boy. The following subjects may be taken: Divinity, English, Latin, Greek, French, German, Mathematics, Physics, Chemistry, Biology, History, Geography, Economics, Art, Music and Woodwork.

HOUSES

Each House is run by a Housemaster, assisted by a House Tutor, and is smaller than in most Public Schools to ensure individual attention which is a particular feature of the school



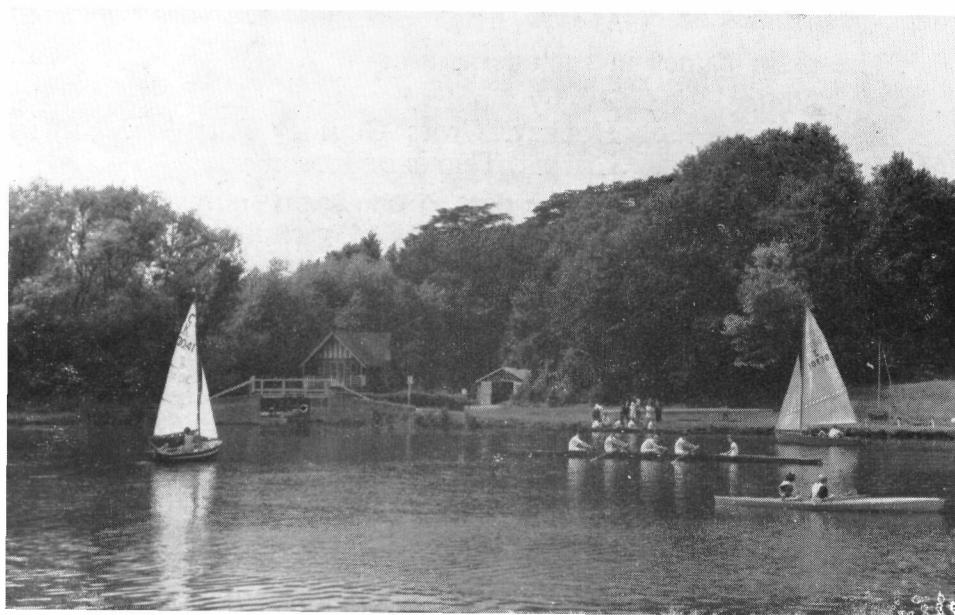
THE GREAT HALL



THE BIOLOGY LABORATORY



PART OF THE PLAYING FIELDS



THE RIVER LOOKING TOWARDS THE BOATHOUSES

CAREERS

There is a Careers Master who works with the Housemasters to give every assistance to boys and their parents in the selection of suitable careers.

COMBINED CADET FORCE

The School has a C.C.F. Contingent with a Naval and Army Section. Boys do not join in their first term. Many attempt the Gold, Silver and Bronze Badges of the Duke of Edinburgh's Award Scheme. There is a miniature Range. Older boys not in the C.C.F. take part in Voluntary Work or some School project.

CLUBS AND SOCIETIES

Boys may join the following Clubs: The Musical Society, Dactyl (Art), Young Farmers', Modelling and Carpentry, Photographic, Electronics, Ornithological, Nautical and Greek Club. In addition, Play Reading, Debating and Chess are regular features of Sunday evenings. There is at least one School Play and one Concert during the year. Facilities exist for boys to join the local Fishing Club.

GAMES AND SPORT

The main games in each term are:—

Winter	..	Rugby Football
Spring	..	Hockey, Cross Country Running, Rowing
Summer	..	Cricket, Tennis or Rowing

Boys are expected to take part in one main sport at least three times a week. On the other days, they may choose, depending on the season, between Swimming, Cross Country Running, Boxing, Fencing, Sailing, Canoeing, Riding, Golf, Squash Rackets and Estate Work. All boys take part in Athletics and Physical Training. The School has its own outdoor Swimming Pool.

SCHOOL DRESS

The boys wear sports jackets or blazers and grey flannel trousers on weekdays, and a standard pattern of School suit and the School tie on Sundays and on official occasions. These items of School dress are also very suitable for wear during the holidays. All items of clothing may be bought at the School Shop.

CHAPEL

Shiplake is a Church of England School and boys are expected to take a full part in all activities connected with the Christian life of the community.

The School has converted its old Tithe Barn for use as a Chapel on Sundays. Boys are expected to attend Chapel at least once on Sunday. Each week-day starts either with a short Service in the Great Hall, or an opportunity for private prayer in the Village Church.

Holy Communion is celebrated once during the week. Compline is said on Saturday evenings. Parents are always welcome at any of these Services.

The Chaplain holds classes which begin in the Summer Term, for those boys who wish to be Confirmed in the following November. Maximum number in each class is nine.

FEES AND ADMISSION

Boys are admitted after the Common Entrance Examination and a satisfactory interview with the Headmaster. In the Common Entrance Examination, allowance is made for interrupted education as a result of travel or illness, and consideration is given to indication of talent in any particular subject. The earliest age for admission except in special circumstances is 13. Scholarships of up to half fees may be awarded on the Common Entrance Examination.

The Headmaster has the right to ask for the removal of a boy at his discretion.

Fees are required to be paid in advance not later than the first day of each term, as are the extras for the previous term. The Governors reserve the right to charge interest at Bank Rate from the beginning of the relevant term on overdue accounts.

LEAVE OUT

Boys are allowed out on Sundays, apart from the first two and last two Sundays of any term. While no hard and fast rule is laid down, experience shows that these leave outs should be limited to three per term. There is a half-term break in the Winter and Summer Terms. During each term, Two Sundays are designated as Long Leave Sundays, when boys are allowed out until 9.30 p.m. Normally they have to return by 6.30 p.m.

RULES AND REGULATIONS

The Governors reserve the right to alter, amend or add to the terms of this prospectus as they may deem advisable in the interests of the School.



EVERETT HOUSE



WELSH HOUSE

FEES

The School Fees are £166 a term. At the start of a boy's career at Shiplake a General Equipment Charge of 20 guineas is made to cover the use of linen and all equipment during his time at the School. There is also a termly charge of 5 guineas for Laundry.

In order to ensure the welfare of the boys, the Governors reserve the right to increase the fees by up to 10 guineas per term without notice. Written notice of at least one term will be given to parents of proposed increases in excess of 10 guineas.

School outfits, travelling and other standard School extras are charged separately. No fee is added for medical attention except for the services of a Specialist or nurse. Optional extras: Instrumental Music, Elocution, Riding, Squash Rackets, Golf, Dancing, Pottery and Fencing are charged by arrangement. A termly subscription is payable for membership of the Rowing and Sailing Clubs.

Each boy buys his own stationery, which is charged to his parents, but the class books below the Sixth Form are loaned by the School at a terminal charge of £1 10s. 0d.

An Entrance Fee of 5 guineas is charged on completion of the Admission Form. This is returnable if a boy can only be entered on the Waiting List and no vacancy for him arises. Two terms before the date of entry, a further Registration Fee of 20 guineas is charged. This is returnable if the boy fails the Common Entrance Examination or interview. If a boy is entered as first choice for another School and passes the Common Entrance Examination for that School, the Registration Fee is returnable provided Shiplake College is informed immediately that no vacancy is required.

